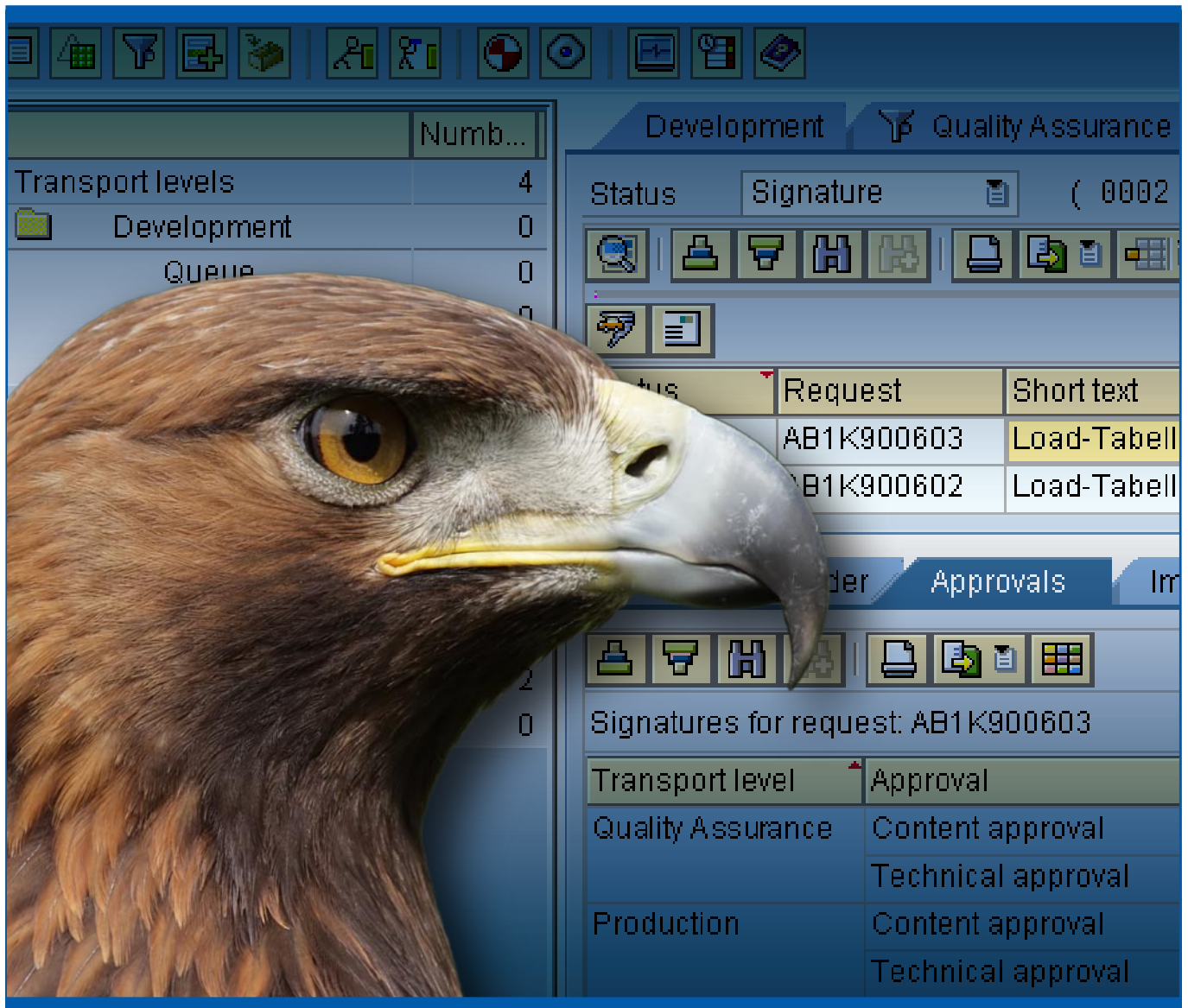


theGuard! TransportManager



The image shows a screenshot of the SAP Transport Manager interface. A large, detailed image of an eagle's head is overlaid on the left side of the screenshot. The interface includes a top toolbar with various icons, a left-hand navigation pane with a tree view, and a main content area with several panels. The tree view shows a hierarchy: 'Transport levels' (4), 'Development' (0), and 'Queue' (0). The main content area has tabs for 'Development' and 'Quality Assurance'. Below these, there's a 'Status' field set to 'Signature' and a '(0002' indicator. A table lists transport requests with columns for 'Request' and 'Short text'. Below this, there are tabs for 'Approvals' and 'Im...'. A section titled 'Signatures for request: AB1K900603' contains a table with columns for 'Transport level' and 'Approval'.

Request	Short text
AB1K900603	Load-Tabell
AB1K900602	Load-Tabell

Transport level	Approval
Quality Assurance	Content approval
	Technical approval
Production	Content approval
	Technical approval

**Synchronize and Secure Your
ABAP and Java Transports in SAP.**



theGuard! TransportManager

„theGuard! TransportManager played a vital part in the restructuring of our Change Management.“

Thomas Wind, Head of IT Enterprise Services at Heidelberger Druckmaschinen

The Challenges of SAP Change Management

■ SAP systems handle mission-critical and accounting-related processes within your business while having to comply with ever increasing requirements regarding consistency, transparency, and auditability of processes and data. Changes in these systems often entail risks that could bring your entire business to a halt.

These risks can only be minimized through high standards of quality and security in change management. Secure transports thus play a central role in SAP environments. They ensure that changes are transferred to production operation where they will affect your day-to-day business.

Caution! Audits, SOX, and Other Regulations

■ The definition and adherence to change processes as well as their auditability and continuous documentation are high on the agenda of internal and external auditors. The reasons for this are new statutory requirements, which are the driving force behind the introduction of an internal control system.

Transports are displayed in the workflow monitor.

The legal requirements are set out especially in the Sarbanes-Oxley Act (SOX), the German Banking Act (KWG), and the German principles of proper accounting (GOB). These regulations concern businesses with both national and international operations. Processes and solutions have to comply with global requirements. Companies that are publicly listed in the USA are even required to adhere to these regulations under penalty of law.

The world-renowned consultancy Ernst & Young has confirmed that theGuard! TransportManager supports the guidelines listed above. In combination with its SAP certification as an official add-on product, which was achieved on the latest SAP NetWeaver release, this underlines the investment security that goes along with purchasing theGuard! TransportManager

Keep your Transport Management on Track

■ theGuard! TransportManager is an easy-to-use software for the automated distribution of program and data modifications within your SAP ABAP and Java applications. Authorization concepts and workflows tailored to your needs control the import of these changes into distributed SAP system landscapes.

Now you can finally establish and enforce the principle of segregation of duties and have your business departments confirm successful testing of new functionalities through electronic signatures. You can boost the motivation and efficiency of your SAP Basis team by relieving it of routine tasks.

With theGuard! TransportManager, version mismatches and the associated financial losses are a thing of the past. Invest less time and money in quality assurance and avoid transport collisions or the import of unwanted changes into mission-critical production systems.

theGuard! TransportManager is fully integrated with SAP, eliminating the need to invest in new hardware. Its convenient operation within the familiar SAP environment guarantees a rapid introduction and acceptance among users and administrators.

Transport level	Approval	Approver
Quality Assurance	Content approval	System
	Technical approval	System
Production	Content approval	Realtech
	Technical approval	

Synchronization of ABAP and Java Transports

■ The introduction of SAP NetWeaver increases the level of heterogeneity in SAP landscapes. The resulting dependency on development objects of the ABAP and Java environment call for a solution that ensures the synchronous distribution of these objects into the test environment and, subsequently, into the production systems.

theGuard! TransportManager allows businesses to synchronously distribute logically interdependent ABAP and Java objects in SAP NetWeaver system landscapes. The management of the related transports is consistent and is realized in a shared workflow monitor.

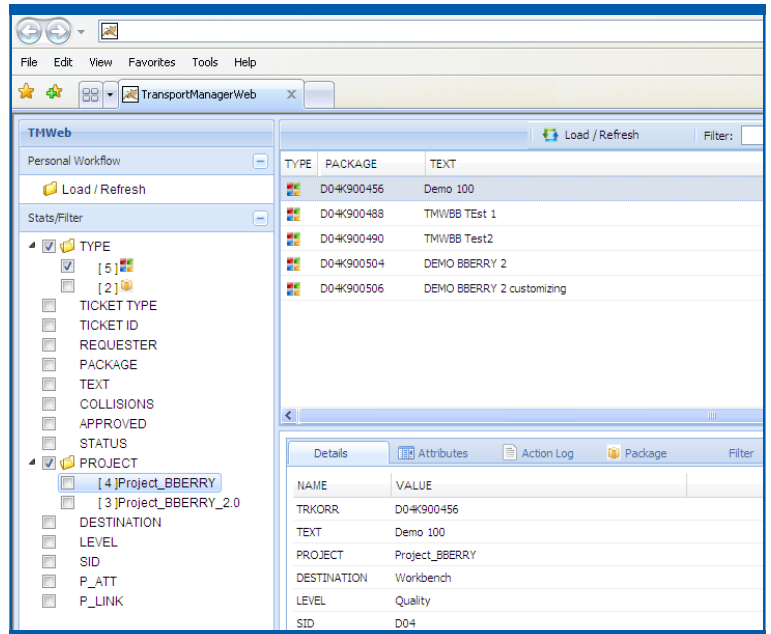
The new solution is based on the Enhanced Change and Transport System (CTS+) introduced by SAP for SAP NetWeaver 2004s that consolidates and harmonizes former stand-alone solutions in the field of SAP software logistics.

User Acceptance and Contactability

■ Approval processes often involve employees who, due to their position in the company, have little or no experience working in SAP interfaces. Starting with release 5.2, this group of users can now benefit from an intuitive Web interface. Administrators can configure it to include only those functions that are of importance to individual approvers and limit their view to relevant requests and packages. It is also possible to grant approvals using BlackBerries or smart phones, making it easier to contact the responsible approvers.

Comprehensive Application Lifecycle Management

■ With the Change Management Interface (CMI) module, theGuard! TransportManager offers open interfaces for the integration with existing change and application lifecycle solutions, thus enabling you to seamlessly integrate the SAP world with your central ITIL processes. This combines the benefits of a general change management solution with the SAP-specific advantages of theGuard! TransportManager. At the same time, users can continue to work with an interface they are familiar with.



System requirements

Installation

- ▶ theGuard! TransportManager is an ABAP/4 only development which exists in its own name space. Its installation simply comprises the import of several SAP transport requests into the involved systems

Hardware

- ▶ No additional hardware required because of its implementation in the SAP system
- ▶ Operating system, database, network
- ▶ Independent, implemented in the SAP system

SAP release

- ▶ theGuard! TransportManager 5.2 requires SAP Basis release 4.6c or higher

Security concept

- ▶ Utilization of a proprietary SAP authorization object

Customizable web interface.

At a Glance

- ▶ Increased availability and consistency of your SAP systems
- ▶ Avoidance of collisions and version mismatches in SAP change management
- ▶ Reduced quality assurance efforts
- ▶ Highly transparent processes because of automatic notifications to everyone involved
- ▶ Individual authorization concepts for the approval of transports and workflows
- ▶ Synchronous transport of ABAP and Java objects in SAP NetWeaver
- ▶ Compliance with specific audit requirements (SOX and KWG)

theGuard! Products and Capabilities

	Business Process Management	Business Service Management	IT Service Management	Application Lifecycle Management	Configuration Management	CMDB
theGuard! Service Management Center						
theGuard! Business Process Manager	●					
theGuard! Business Service Manager		●	●		●	●
theGuard! ServiceDesk			●			
theGuard! CMDB		●	●		●	●
theGuard! Change & Configuration Management						
theGuard! ChangePilot				●		
theGuard! TransportManager				●		
theGuard! SyncAssist				●		
theGuard! InterfaceManager	●					

SWTM-056-1005-01en

About REALTECH

REALTECH AG is an international holding company that specializes in SAP technology consulting and the development and marketing of IT service management software.

REALTECH Software Products GmbH is **Europe's leading provider of system management software**. REALTECH's theGuard! suite of products is the world's only highly integrated software portfolio for **enterprise-wide IT management and secure business processes**.

theGuard! Service Management Center includes software for your business process and business service management needs, supports all service management disciplines according to ITIL V3, and offers comprehensive monitoring, analysis, and alerting features. REALTECH's **theGuard! Change & Configuration Management** products ensure the reliable execution of development and change processes across multiple systems and applications. This improves the quality of applications (e.g. SAP) and helps ensure system stability and auditability.

Over 1,000 companies and institutions the world over have been relying on theGuard! software solutions for over a decade now. This includes companies such as OSRAM, John Deere, Atos Origin, EnBW, German savings banks, and the German Army.

REALTECH Software Products GmbH

Industriestr. 39c · 69190 Walldorf · Germany
 Phone +49.6227.837.0 · Fax +49.6227.837.837
 customer-services@realtech.de · www.realtech.com