

software



Whitepaper

TransportManager for SAP Java

(Stand 05/2007)

SAP[®] Certified
Integration



TransportManager 5.1 offers all of the following important advantages for ABAP and Java:

- Flexible and easy-to-configure Workflows including any authorization schema you want
- Content and/or Technical based approval of transport requests for Java or ABAP
- Automatic Quality Assurance Checks
- Automatic scheduling of imports
- Flexible and comprehensive security settings
- Detailed historical tracking and reporting of all changes
- Collision and Overtaker² Checks
- Tracking and Reporting for detailed auditing requirements
- Management of system copies and transport deltas

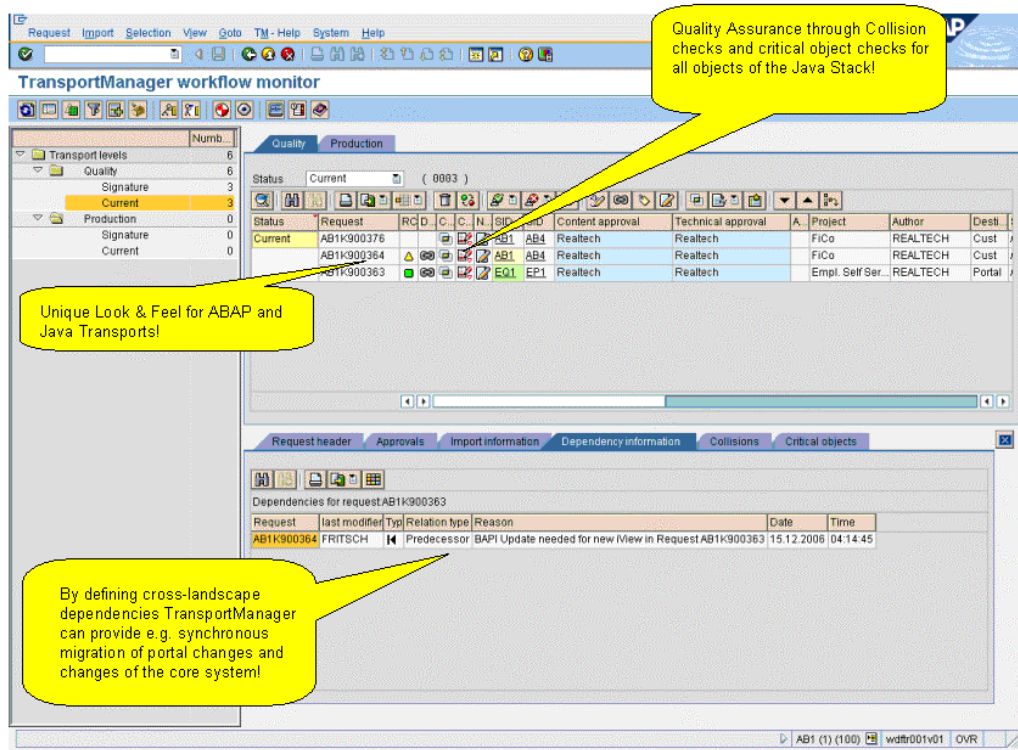
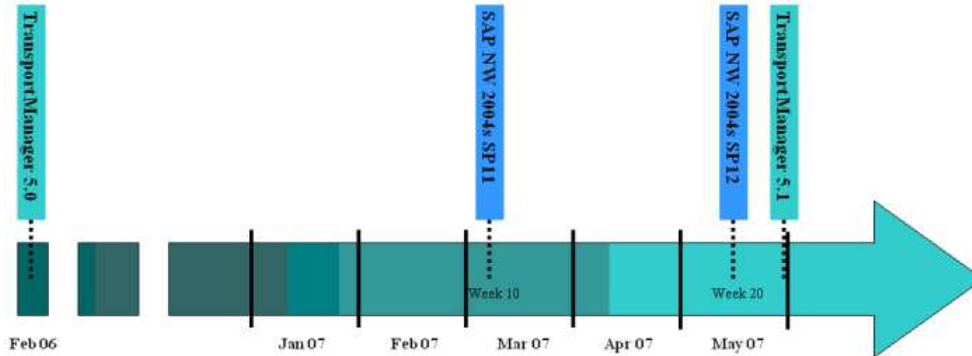


Figure 3: TransportManager – Synchronized ABAP and Java Change Management across system landscapes

² Overtakers are defined as a transport which contains changes to objects or tables where those objects or tables have a timestamp that is later than the objects contained in the transport you are importing, resulting in overwriting of changes. For Java changes collision checks are currently not possible.

Roadmap



SAP NW 2004s SP11	First Prototype from SAP for Dual Stack Systems
SAP NW 2004s SP12	SAP CTS+ Rollout
TransportManager 5.0	Support of CTS+ for Dual Stack Systems
TransportManager 5.1	Support of CTS+ for Java only Systems

*) Dual-Stack Systems on WAS \geq 7.00 SP12

Licensing Requirements

If you want to operate TransportManager for Java you will need an additional NetWeaver-Basekit License from REALTECH. This license enables TransportManager for all Java changes.

In addition, if you want to deploy Java code to a "Single Java Stack" system, for example, an SAP EP system, you will need a standard TM target system license³ for each system.

Dual-Stack target systems on SAP WAS $<$ 7.00 SP12 are treated as 2 target systems while on SAP WAS \geq 7.00 SP12 they are treated as a single target system.

There is also a license needed for each Non-ABAP development system.

³ A TransportManager Target System is defined as system where your transports normally go to (e.g. QAS client 600, PRD client 600)

Certification

TransportManager is officially „Certified for SAP NetWeaver“ and can be used for all SAP applications and all relevant SAP NetWeaver-Components/Versions.



Additional Information about
REALTECH Software at:
www.realtech.com

REALTECH AG
Industriestr. 39c
69190 Walldorf • Germany
Tel +49.6227.837.880
Fax +49.6227.837.837
<mailto:customer-services@realtech.com>
<http://www.realtech.com>

