

InterfaceManager IM/3

Enterprise Application Integration (EAI)

Enterprise Application Integration stands for automated data exchange between diverse applications and systems. It is a seemingly complex field which is often associated with high costs. Especially for small to medium-sized businesses this presents a serious challenge. Large EAI solutions are often oversized and complicated, stretching budgets and requiring specific know-how by expensive experts.

These businesses are looking for lean, flexible and cost-effective solutions like REALTECH InterfaceManager IM/3.

InterfaceManager IM/3 – the intuitive solution for effective interface management.

IM/3 – An Overview

InterfaceManager IM/3 is a comprehensive but cost-effective EAI solution for SAP-oriented system landscapes. The strength of this solution lies in its intuitive operation and direct integration in SAP making investments in additional hard- or software unnecessary.

IM/3's program generator will allow you to define interface processes from a graphical user interface. Even for minor changes the interfaces defined there are automatically converted to optimized ABAP code – ensuring availability and maximum performance of the programs.

During productive operation, data exchange is reliably managed by integrated control mechanisms which also allow for event-triggered control if required. Monitoring and error management ensure transparent data exchange. Data errors are reduced while process quality is enhanced.

Even if an error occurs during posting, IM/3 will provide the respective department with easy-to-use tools for simple data correction.

The provision of comprehensive documentation will take the edge off of any future audits.



Successfully Realize System-wide Business Processes

- Standardized interfaces stabilize the function of business processes.
- Save time and money on interface development and maintenance while freeing your staff from time-consuming routine tasks.
- External customer and supplier processes can be easily synchronized with your ERP systems making your business stand out from the competition.
- Data exchange is incorporated into central monitoring. IM/3Xchange thus guarantees high levels of transparency and automated error alerting.

The Daily Interface Routine

- Interfaces are programmed manually which is error-prone and consumes staff resources.
- Compliance with new regulations is often hard to achieve for manually programmed interfaces because programming guidelines were ignored or documentation is incomplete.
- The problem of lacking standardization negatively impacts process stability and performance.
- Tools for centralized monitoring, error detection and correction are often not available.
- Centralized control and monitoring of interface processes is hardly feasible.
- Data is usually exchanged using tools such as ftp limiting centralized control and monitoring capabilities for these processes.

As a consequence, business processes are profoundly affected and expertise is tied to individual staff members - while interfaces would not withstand an audit, possibly impacting your entire enterprise (and Basel II and the Sarbanes-Oxley Act are just a few of today's challenges).

InterfaceManager IM/3

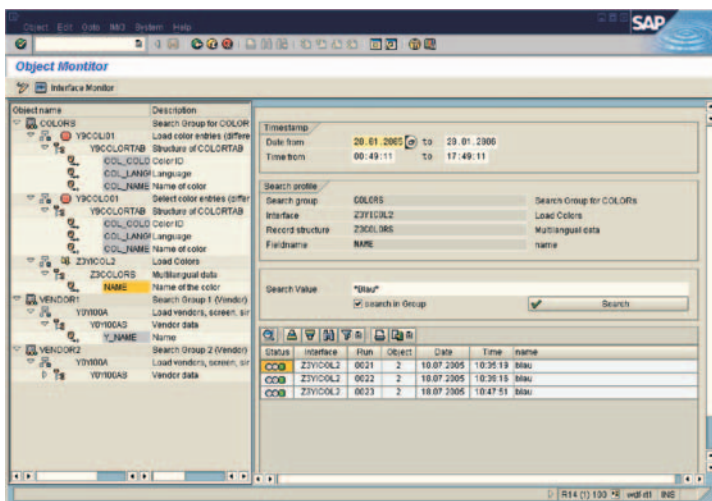
How Can Your Business Benefit from IM/3?

- Reduce costs and efforts associated with interface development and maintenance.
- Reduce administrative tasks in productive operation by implementing automatisms.
- Its open technology and universal applicability make IM/3 a future-proof choice.
- Take the load of your IT department by shifting process responsibility to the respective departments.
- Increased availability of mission-critical business processes.
- End-to-end monitoring of business activities with dialogue-oriented error management.
- Competitive advantage through simple and rapid integration of supplier and customer systems.
- Attractive licensing and support fees secure a rapid return on investment.
- No longer depend on expensive experts and minimize training efforts.

With IM/3 you can now benefit from the expertise of a company closely connected to SAP with more than 10 years of experience in SAP technology consulting.

IM/3 consists of several functional modules. They are delivered as a whole but can be used individually as well.

InterfaceManager
IM/3:
Object Monitor



IM/3 in Practice

IM/3 and IM/3 Xchange currently secure ...

- the global spare parts supply of a major German automotive manufacturer.
- the production control and planning of a luxury automaker.
- the logistics processes of businesses in the metal-working industry.
- the enterprise resource planning processes of a German global player in the logistics industry.
- the global control of all warehouses of a renowned textile manufacturer.
- the data exchange of POS systems of a German electronics discount chain.
- the integration of external accounting systems of several European banks.
- and so on ...

Thanks to its module independence in SAP, IM/3 will certainly meet your requirements, too!

InterfaceManager IM/3: Menu Shell



Ingo Schuchardt,
Head of SAP Basis

"Our investment in IM/3 has really paid off. Master data is now maintained via a central point of administration: the SAP system at headquarters. IM/3 gives us highly efficient data links with our stores, enabling us to exchange mission-critical information quickly and reliably. It has also significantly reduced our maintenance overhead, and generated a return on investment after just 18 months."

